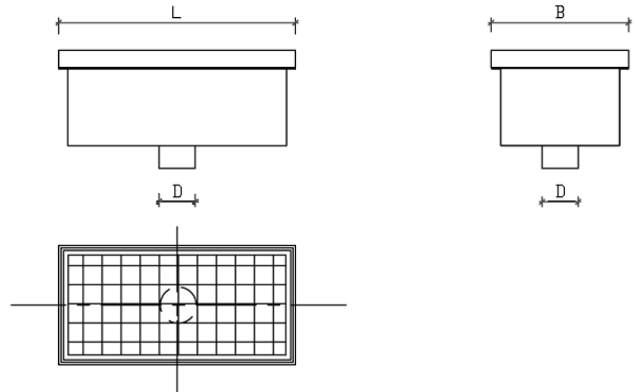
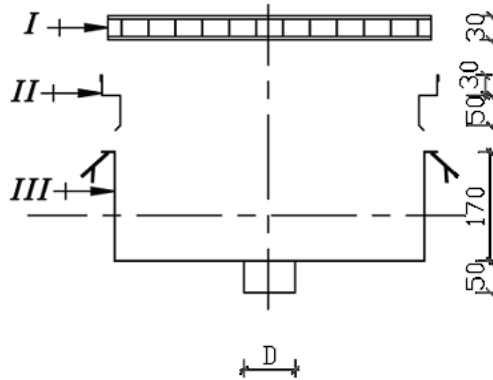




ITEM No.

ENGINEERING, TRADING & CONTRACTING
ENG. Hosny El Said & CO.

FLOOR TROUGH AND GRATE



SPECIFICATIONS

- ▶ **"I" Floor Drain Cover (MFP06-01)**
 - 3 mm thick stainless steel (304).
 - 30 mm spacing between stripes.
 - Height is 30 mm.
- ▶ **"II" Floor Drain Frame (MFP06-02)**
 - Stainless steel.
 - Height is 50 mm and adjustable.
- ▶ **"III" Floor Drain Box (MFP06-03)**
 - Stainless steel.
 - Height is 200 mm or 150 mm.

TECHNICAL DATA

Model		MFP06-00			
Dimensions	Body (L) cm × (B) cm	25 × 25	50 × 25	50 × 50	70 × 40
	Outlet Diameter (D) inches	3	3	4	4

- ▶ Floor drain body height and drain outlet location and diameter must be provided.
- ▶ Other sizes and specifications available upon request.

MASTER, in line with its policy to continually improve its production, reserves the right to change specifications without notice

381 Marwa St., Omar Bin El Khatab zone, Gisir El-Suez, Cairo, Egypt.

Tel :+202 26998710 - Fax:+202 26998710 * Mobile:+2 0123256512 * +2 0184098127 .

Www. Mastereng-eg.Com ** Info@Mastereng-eg.Com

Corporate Member – Foodservice Consultants Society International